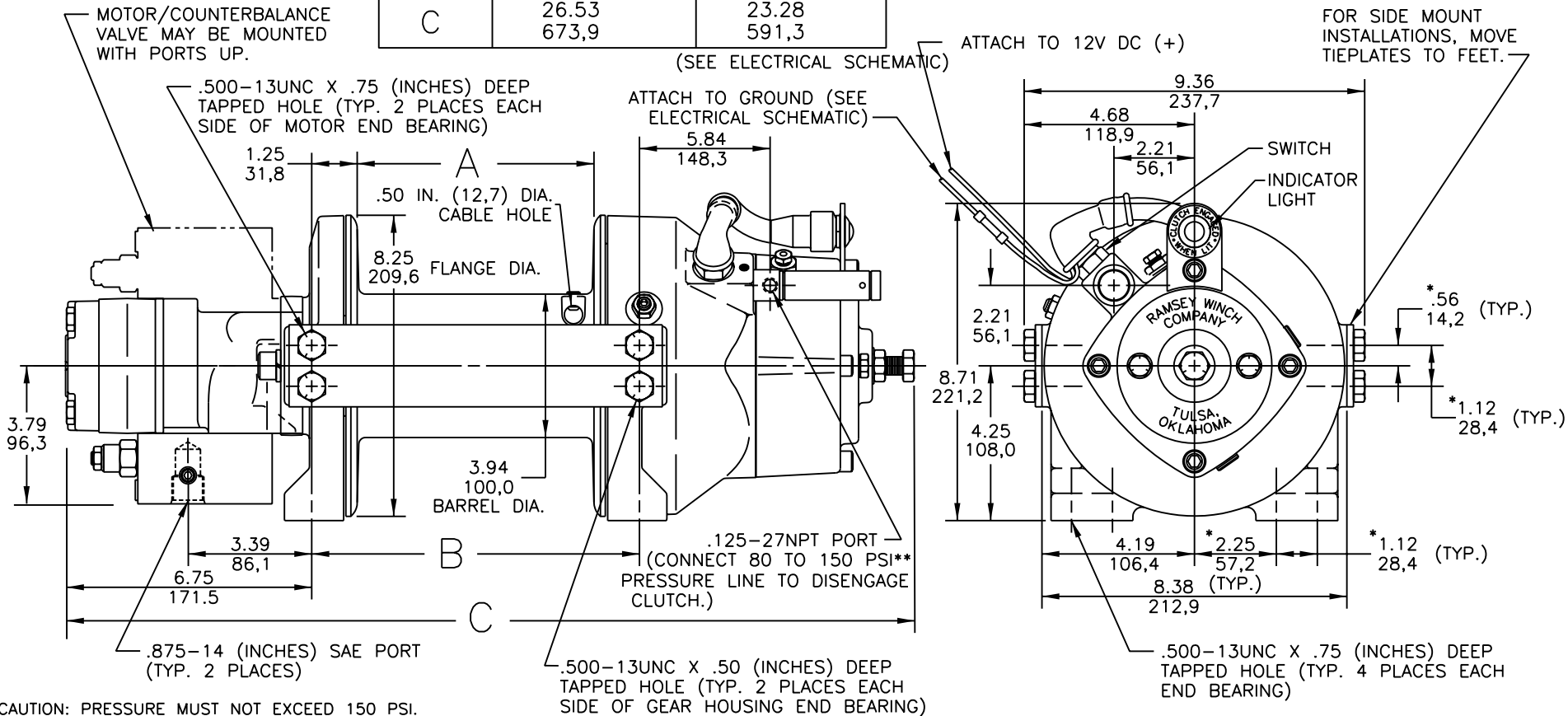


DIM. LETTER	RPH-8,000-S ("STD." DRUM)	RPH-8,000-Y ("Y" DRUM)
A	9.75 247,6	6.50 165,1
* B	12.25 311,1	9.00 228,6
C	26.53 673,9	23.28 591,3



DIMENSIONS SHOWN ARE INCHES OVER MILLIMETERS  
WINCH MOUNTING CAPSCREWS MUST MEET OR EXCEED SAE GRADE 5 SPECIFICATION

\*NOTE: THESE HOLE LOCATIONS MUST BE HELD WITHIN  $\pm 0.03$ " (0.8 MM) OF TRUE POSITION. RECOMMENDED MOUNTING HOLE DIAMETER IS .53" (13.5 MM).

