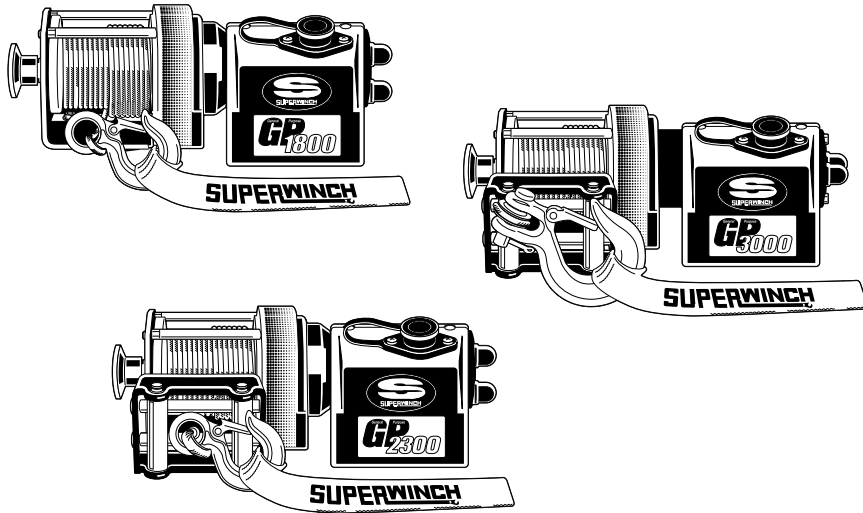


SUPERWINCH®



OWNER'S MANUAL

INSTALLATION • OPERATION • MAINTENANCE
SAFETY PRECAUTIONS • REPAIR PARTS

GP1800, GP2300, GP3000
12 Volt DC Electric Winches

▲ CAUTION

**READ AND UNDERSTAND THIS MANUAL BEFORE INSTALLATION
AND OPERATION OF YOUR SUPERWINCH PRODUCT.**

Superwinch, Inc.
Winch Drive
Putnam, CT 06260
U.S.A.
Tel. (860) 928-7787
Fax (860) 963-0811

Superwinch, Ltd.
Abbey Rise, Whitchurch Road
Tavistock, Devon PL 19 9DR
England
Tel. +44 (0) 1822 614101
Fax +44 (0) 1822 615204

INTRODUCTION

Thank you for purchasing a GP winch from Superwinch. It has been designed and manufactured to provide years of trouble-free operation. We hope you will be pleased with its performance. If you are not, for any reason, please contact our Customer Service Department: (860) 928-7787 USA; +44 (0) 1822 614101 England. When requesting information or ordering replacement parts, always give the following information:

1. Winch Part Number
2. Serial Number (found on housing)
3. Part Number (found in Replacement Parts List section)
4. Part Description

Please read and understand this Owner's Manual prior to installing and using your winch. Pay particular attention to the General Safety Information. Your winch is a very powerful machine. If used unsafely or improperly, there is a possibility that property damage or personal injury can result. We have included several features in this winch to minimize this possibility; however, your safety ultimately depends on your caution when using this product.

SAFETY PRECAUTIONS

The responsibility for safe operation of this winch ultimately rests with you, the operator. Read and understand all safety precautions and operating instructions before installing and operating the winch. Careless winch operation can result in serious injury and/or property damage.

Throughout this manual, you will find notations with the following headings:



DANGER Indicates an imminently hazardous situation which, if not avoided, will result in death or serious injury.



WARNING Indicates a potentially hazardous situation which, if not avoided, could result in death or serious injury.

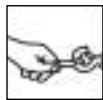


CAUTION Indicates a potentially hazardous situation which, if not avoided, may result in minor or moderate injury. This notation is also used to alert against unsafe practices.

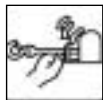
The following symbols on the product and in the Owner's manual are used:



Read Owner's Manual



Always Use Handsaver



Keep clear of winch, wire rope and hook while operating



Never use winch to lift or move people



Never use winch to hold loads in place

Note: Indicates additional information in the installation and operation procedures of your winch.

Correct installation of your winch is a requirement for proper operation.

Please Note: Winch is designed primarily for intermittent applications. This winch is not designed to be used in industrial or hoisting applications and Superwinch does not warrant it to be suitable for such use. Superwinch manufactures a separate line of winches for industrial/commercial use. Please contact our Customer Service Department for further information. Congratulations on your choice!

GENERAL DESCRIPTION

Each winch is equipped with a permanent magnet motor and is designed for intermittent duty general use. The winch is not designed to be used in industrial or hoisting applications and the manufacturer does not warrant it to be suitable for such use.

Freespool Clutch is operated by a pull and turn knob which disengages the gearbox to allow the wire rope to be pulled out without using electric power. A tension plate reduces backlash and snarling when pulling out the wire rope.

SPECIFICATIONS

GP1800

Working Load* 1,800 lb. (816 kg)
 Wire Rope 5/32" x 60'
 Motor 12VDC 0.71 hp (0.5 kW) peak
 Gear Ratio 153:1

GP2300

Working Load* 2,300 lb. (1043 kg)
 Wire Rope 5/32" x 60'
 Motor 12VDC 0.71 hp (0.5 kW) peak
 Gear Ratio 153:1

GP3000

Working Load* 3,000 lb. (1360 kg)
 Wire Rope 3/16" x 50'
 Motor 12VDC 1.1 hp (0.8 kW) peak
 Gear Ratio 153:1

* Based on first layer performance

ROLLING LOAD CAPACITIES

GP1800

Slope*	10% (6°)	20% (11°)	30% (17°)	100% (45°)
Lbs.**	7,525	5,100	3,925	1,925
kg**	3413	2313	1780	873

GP2300

Slope*	10% (6°)	20% (11°)	30% (17°)	100% (45°)
Lbs.**	10,050	6,800	5,225	2,575
kg**	4559	3084	2370	1168

GP3000

Slope*	10% (6°)	20% (11°)	30% (17°)	100% (45°)
Lbs.**	15,075	10,200	7,825	3,850
kg**	6838	4627	3549	1746

Ratings assume a 10% coefficient of friction.

* A 10% slope is a rise of one foot in ten feet. Slope in approximate degrees is also shown above.

** All loads shown are for single-line operation. Double-line operation with optional pulley block (see Figure 2) approximately doubles capacity of winch.

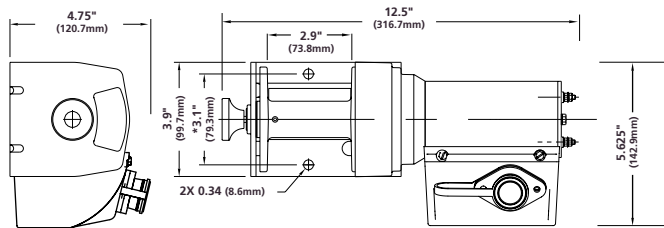
UNPACKING

This carton contains the following items. Please unpack carefully.
Read instructions before beginning.

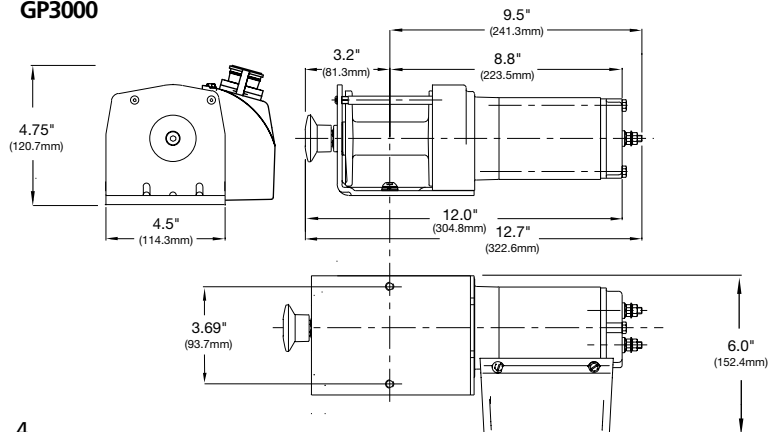
Description	Quantity
Winch assembly with wire rope	1
Circuit breaker assembly with hardware	1
Switch	1
Handsaver	1
Hardware kit	1
Lead wire assembly	1

DIMENSIONS

GP1800, GP2300



GP3000



PERFORMANCE

GP1800

Wire Rope Layer	Max. Pulling Capacity lbs.	Max. Pulling Capacity kg
1	1,800	816
2	1,470	667
3	1,230	558
4	1,080	490

Load lbs.	kg	Speed		Motor Current Amps
		ft/min	m/min	
0		15.5	4.7	8
500	227	12.5	3.8	30
1,000	454	10.0	3.0	60
1,500	680	6.8	2.1	90
1,800	816	6.0	1.8	108

GP2300

Wire Rope Layer	Max. Pulling Capacity lbs.	Max. Pulling Capacity kg
1	2,300	1043
2	1,898	861
3	1,582	718
4	1,380	626
5	919	417
6	827	375

Load lbs.	kg	Speed		Motor Current Amps
		ft/min	m/min	
0		15.5	4.7	8
500	227	12.5	3.8	30
1,000	454	10.0	3.0	60
1,500	680	6.8	2.1	90
1,800	816	6.0	1.8	108
2,300	1043	1.6	0.5	140

GP3000

Wire Rope Layer	Max. Pulling Capacity lbs.	Max. Pulling Capacity kg
1	3,000	1360
2	2,375	1077
3	1,975	896
4	1,675	760
5	1,475	669
6	1,300	590

Load lbs.	kg	Speed		Motor Current Amps
		ft/min	m/min	
0		12.0	3.6	15
500	227	11.0	3.3	38
1,000	454	10.5	3.2	60
1,500	680	9.0	2.7	85
1,800	816	8.1	2.5	100
2,300	1043	7.0	2.1	130
2,500	1133	6.5	2.0	140
3,000	1360	5.0	1.5	180

* Based on first layer performance

GENERAL SAFETY INFORMATION

Your winch is a very powerful machine. If used unsafely or improperly, there is a possibility that property damage or personal injury could result.

⚠ WARNING *The wire rope may break before the winch stalls. For heavy loads, use a pulley block to reduce the load on the wire rope.*

1. Maximum working load capacity is on the wire rope layer closest to the drum. **DO NOT OVERLOAD. DO NOT ATTEMPT PROLONGED PULLS AT HEAVY LOADS.** Overloads can damage the winch and/or the wire rope and create unsafe operating conditions. **FOR LOADS OVER 1,000 POUNDS (454 kg), WE RECOMMEND THE USE OF THE OPTIONAL PULLEY BLOCK TO DOUBLE LINE THE WIRE ROPE** (Figure 2). This reduces the load on the winch and the strain on the wire rope by approximately 50%. Attach hook to load bearing part. **The vehicle engine should be running during winch operation.** If considerable winching is performed with the engine off, the battery may be too weak to restart the engine.

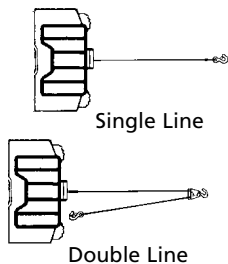


Figure 2

2. **AFTER READING AND UNDERSTANDING THIS MANUAL, LEARN TO USE YOUR WINCH.** After installing the winch, practice using it so you will be familiar with it when the need arises.



3. **DO NOT "move" your vehicle to assist the winch in pulling the load.** The combination of the winch and vehicle pulling together could overload the wire rope and the winch.

4. **ALWAYS STAND CLEAR OF WIRE ROPE, HOOK AND WINCH. IN THE UNLIKELY EVENT OF ANY COMPONENT FAILURE IT'S BEST TO BE OUT OF HARM'S WAY.**

5. **INSPECT WIRE ROPE AND EQUIPMENT FREQUENTLY. A FRAYED WIRE ROPE WITH BROKEN STRANDS SHOULD BE REPLACED IMMEDIATELY.**

Always replace wire rope with the manufacturer's identical replacement part (see Replacement Parts List). Periodically check the winch installation to ensure that all bolts are tight.

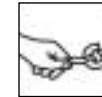
6. **USE HEAVY LEATHER GLOVES when handling wire rope. DO NOT LET WIRE ROPE SLIDE THROUGH YOUR HANDS.**

7. **NEVER WINCH WITH LESS THAN 5 TURNS of wire rope AROUND THE WINCH DRUM** since the wire rope end fastener may NOT withstand full load.

GENERAL SAFETY INFORMATION (CONT.)

8. **KEEP CLEAR OF WINCH, TAUT WIRE ROPE AND HOOK WHEN OPERATING WINCH.**

Never put your finger through the hook. If your finger should become trapped in the hook, you could lose your finger.



ALWAYS USE THE HANDSAVER when guiding the wire rope in or out (See Figure 3).

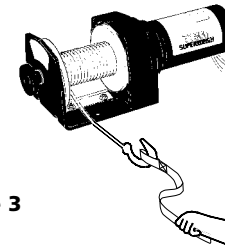


Figure 3

9. **NEVER HOOK THE WIRE ROPE BACK ONTO ITSELF** because you could damage the wire rope. Use a nylon sling (Figure 4).

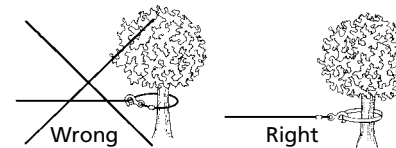


Figure 4

10. It is a good idea to lay a heavy blanket or jacket over the wire rope near the hook end when pulling heavy loads (Figure 5). If a wire rope failure should occur, the cloth will act as a damper and help prevent the rope from whipping.

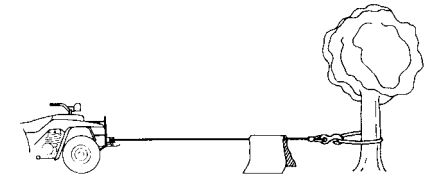
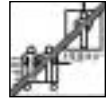


Figure 5

11. **NEVER USE YOUR WINCH FOR LIFTING OR MOVING PEOPLE.**



12. Your winch is not intended for overhead hoisting operations.

13. **AVOID CONTINUOUS PULLS FROM EXTREME ANGLES** as this will cause the wire rope to pile up on one end of the drum (Figure 6). This can jam the wire rope in the winch, causing damage to the rope or the winch.

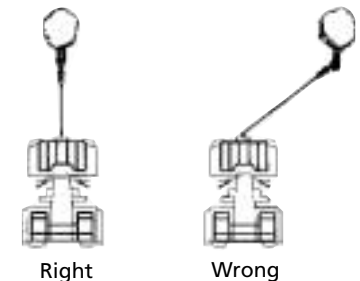



Figure 6

14. **NEVER OBSCURE THE WARNING AND INSTRUCTION LABELS.**

15. Always operate winch with an unobstructed view of the winching operation.

16. Equipment such as tackle, hooks, pulley blocks, straps, etc. should be sized to the winching task and should be periodically inspected for damage that could reduce their strength.

GENERAL SAFETY INFORMATION (CONT.)

17. NEVER RELEASE FREESPOOL CLUTCH WHEN THERE IS A LOAD ON THE WINCH.
18. NEVER WORK ON OR AROUND THE WINCH DRUM WHEN WINCH IS UNDER LOAD.
19. DO NOT OPERATE WINCH WHEN UNDER THE INFLUENCE OF DRUGS, ALCOHOL OR MEDICATION.
20. ALWAYS DISCONNECT WINCH POWER LEADS TO BATTERY BEFORE WORKING IN OR AROUND THE WINCH DRUM so that the winch cannot be turned on accidentally.
21. When moving a load, slowly take up the wire rope slack until it becomes taut. Stop, recheck all winching connections. Be sure the hook is properly seated. If a nylon sling is used, check the attachment to the load.
22. When using your winch to move a load, place the vehicle transmission in neutral, set vehicle brake, and chock all wheels.
23. DO NOT USE THE WINCH TO HOLD LOADS IN PLACE. Use other means of securing loads such as tie down straps. 
24. USE ONLY FACTORY APPROVED SWITCHES, REMOTE CONTROLS AND ACCESSORIES. Use of non-factory approved components may cause injury or property damage and could void your warranty.
25. DO NOT MACHINE OR WELD ANY PART OF THE WINCH. Such

alterations may weaken the structural integrity of the winch and could void your warranty.

26. DO NOT CONNECT WINCH TO EITHER 110V AC HOUSE CURRENT OR 220V MAINS AS WINCH BURNOUT OR FATAL SHOCK MAY OCCUR.
27. Never allow shock loads to be applied to winch or wire rope.
28. Use caution when pulling or lowering a load up and down a ramp or incline. Keep people, pets and property clear of the path of the load.

INSTALLATION

Note: When installing a winch, your installation may vary slightly from the instructions and diagrams that follow, depending upon your vehicle, winch, mounting kit or structural support.

WARNING Before you start your Superwinch installation, disconnect the vehicle ground and positive leads from the battery.

CAUTION For proper operation, NEVER operate or mount the solenoid pack inverted. It may, however, be operated or mounted in any other position.

Step (1)
Prepare a flat, secure mounting location for winch.

Note: Be sure that your structural support is strong enough to support the rated pulling forces of the winch.

WARNING If different length bolts, nuts, washers and other hardware are required for your installation, always use hardware that equals or exceeds the strength grade of the supplied hardware.

Step (2)
Position the winch over the holes in the structural support.

WARNING As you position the winch, make sure that the wire rope winds in the proper rotation on the drum. Your winch is intended to operate in one direction only. Failure to operate the winch in the proper direction can cause the winch brake to operate improperly, and/or cause the winch to fail.

Step (3)
Secure winch (Figure 7) to the structural support using bolts, washers and nuts supplied.

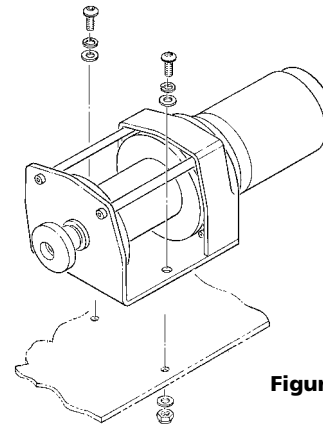


Figure 7

Note: In order to gain access to the hardware directly under the wire rope drum, it may be necessary to unspool the wire rope from the winch drum.

WARNING Be sure that both the mounting plate and winch hardware have been tightened to proper torque specifications. Refer to steps above to determine proper specifications.

CAUTION No part of the vehicle (skid-plates, wiring, auxiliary lights, tires, etc.) should impede the operation of your Superwinch. When mounting, check all vehicle and winch parts for free operation. Be sure that the winch mounting location does not significantly reduce ground clearance.

DANGER DO NOT ATTEMPT TO INSTALL WIRING WHEN THE BATTERY IS CONNECTED. Automotive batteries contain flammable and explosive gases. Wear eye protection during installation and remove all metal jewelry. Do not lean over battery while making connections.

Step (4)
Route the two (2) wires to the battery. To ensure against insulation abrasion and/or cutting, apply several layers of electrical tape where wiring may come in contact with sharp metal parts of the vehicle. Attach the circuit breaker assembly to the end of the wire. Wrap the circuit breaker assembly with electrical tape to prevent accidental short circuits.

Connect the black wire to the battery negative terminal, and connect the terminal to the battery.

INSTALLATION CONT.

Note: If you choose to locate the winch at a greater distance than the wires provided will permit, it may be necessary to purchase a larger gauge wire to get the best performance from your winch. If the total length of additional wire to be added to the system exceeds 10' (3m), use a larger wire gauge size.

FREESPOOL OPERATION

Pull and turn the clutch knob to the "Free" position as shown in Figure 8. If there is a load on the wire rope, the clutch knob may not pull out easily. **DO NOT FORCE THE CLUTCH KNOB.** Release tension on the clutch by jogging out some of the wire rope. Release the clutch and pull out the wire rope and secure to anchor or load. Check that there are at least five (5) turns of wire rope left on the drum. Re-engage the drum by returning the clutch knob to the "Engaged" position. (See Figure 8).

CAUTION *Clutch must be fully engaged before winching. Never engage clutch knob while drum is turning.*

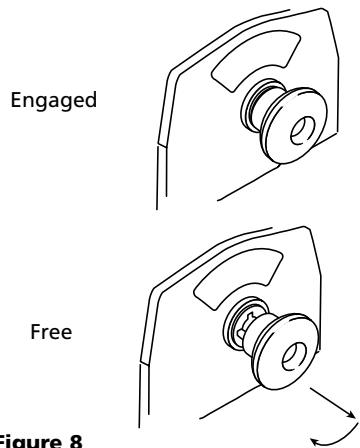


Figure 8

CAUTION *To prevent unauthorized use of the winch, remove pendant control and store in a clean dry area such as the glove box.*

CAUTION *The clutch knob has been adjusted and permanently locked in place with a thread locking compound at the factory. Do not attempt to re-adjust the knob.*

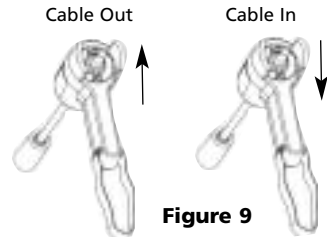


Figure 9

PENDANT OPERATION

The handheld pendant switch activates a solenoid that activates power to the winch motor. To connect the pendant control, remove the cover on the plug receptacle (Figure 10) and insert the plug end of remote switch. The plug on the pendant control cord is keyed and will fit into the socket only one way. The toggle switch returns to the "Off" position when released. To change direction, move the toggle in the other direction (Figure 9).

CAUTION *The switch assembly must be kept free of dirt and moisture to ensure safe operation.*



Figure 10

EXTENDING THE LIFE OF YOUR WINCH

1. **KEEP A TIGHTLY WOUND WIRE ROPE DRUM.** Do not allow the wire rope to become loosely wound. A loosely-wound spool allows a wire rope under load to work its way down into the layers of wire rope on the drum. When this happens, the wire rope may become wedged within the body of the windings damaging the wire rope. To prevent this problem, keep the wire rope tightly and evenly wound on the drum at all times. A good practice is to rewind the wire rope under tension after each use. One way to do this is to attach the hook to a stationary object at the top of a gradual incline and winch your vehicle up the incline.
2. **DO NOT ALLOW WINCH MOTOR TO OVERHEAT.** Remember, the winch is for intermittent use only. During long or heavy pulls the motor will get hot. For pulling at rated capacity, allow motor to cool after 20 seconds of "On" time. At loads less than 50% of rated capacity, allow to cool after 2 minutes of "On" time. **KEEP THE ENGINE RUNNING TO RECHARGE THE BATTERY** during this break.
3. **USE A PULLEY BLOCK FOR HEAVY LOADS.** To maximize winch and wire rope life, use a pulley block to double line heavier loads (Figure 11).

CAUTION *If the winch motor stalls, do not continue to apply power.*



Figure 11

4. The pull required to start a load moving is often much greater than the pull required to keep it moving. **AVOID FREQUENT STOPS AND STARTS** during pull.
5. **PREVENT KINKS BEFORE THEY OCCUR.**

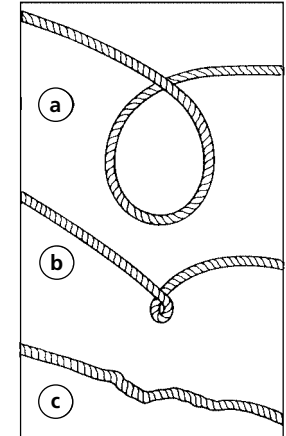


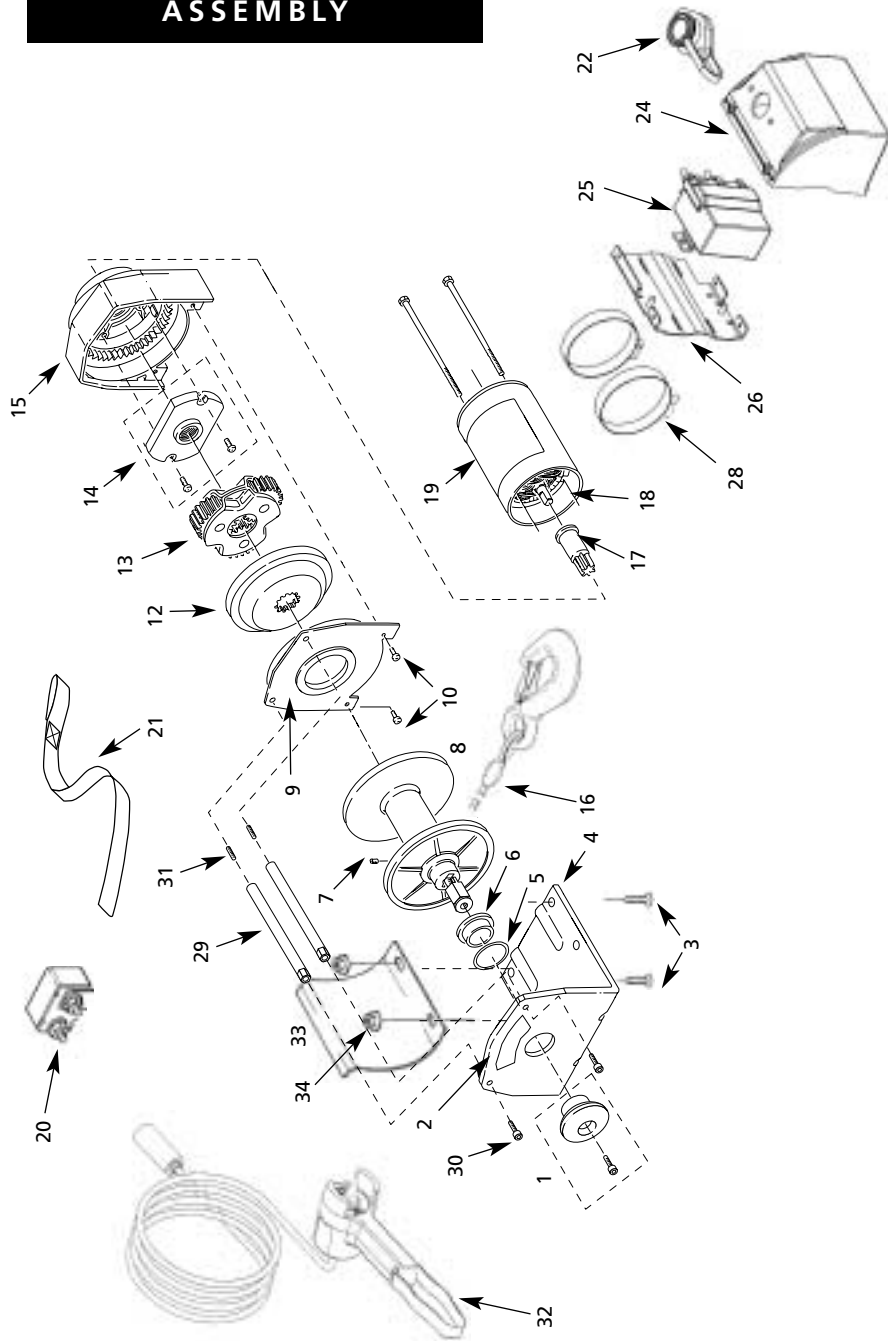
Figure 12

- a. This is the start of a kink. Wire rope should be straightened.
- b. Wire rope was pulled and loop has tightened into a kink. Wire rope is now permanently damaged and must be replaced.
- c. Result of kinking is that each strand pulls a different amount causing strands under greatest tension to break and reduce load capacity of wire rope. The wire rope must be replaced.

REPLACING THE WIRE ROPE

Never substitute a heavier or lighter wire rope. Never use rope made of any other materials other than wire. **Always replace damaged wire rope with manufacturer's**

GP1800 WINCH ASSEMBLY

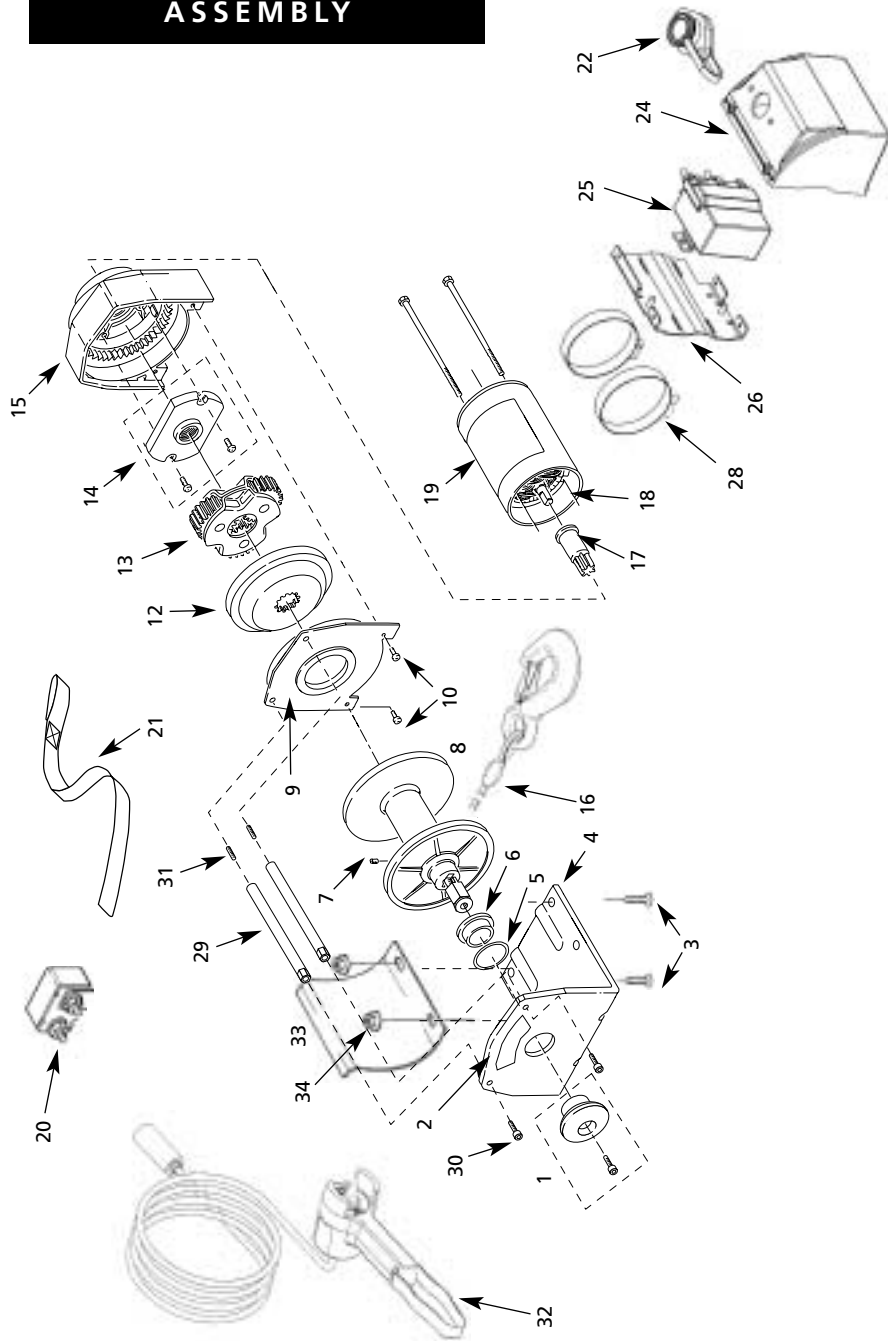


REPLACEMENT PARTS LIST

Reference Number	Description	Part Number	Qty
1	Freewheel Knob Assembly	87-10786	1
2	Label-Instruction-Freewheel	87-10903	1
3	Screw, FCHSS M6 x 1 x 16	87-22291-02	2
4	T-Series Baseplate Assembly	87-20426	1
5	.020 Thick Flat Washer	90-23193-03	AR
	.030 Thick Flat Washer	90-23120-05	AR
6	T-Series Bushing	87-10466	1
7	M5 x 0.8 x 6 Set Screw	87-23309-01	1
8	Drum Assembly	87-20371	1
9	Drum Support Plate	87-33329	1
10	Screw, STPH M4 x 0.7 x 10	87-23030-14	2
12	T-Series Rotator Gear	87-33289	1
13	T-Series Carrier Assembly	87-20308	1
14	Brake Assembly	87-22541-01	1
15	Stationary Gear Housing Assembly	87-20425	1
16	Wire Rope Assembly with hook	1535C	1
17	Motor Pinion Gear	87-22401	1
18	Motor (includes Through-Bolts) and label	87-17355	1
19	Product/Warning Label	87-22936	1
20	Circuit Breaker Assembly	87-10799	1
21	Handsaver, Nylon Cord	87-31120	1
22	Socket Assembly	90-25048-01	1
24	Solenoid box with label	87-17357	1
25	Solenoid, 12V	98-10880	1
26	Solenoid bracket	87-24414	1
28	Clamp	87-14460	2
29	Tie Rod	87-10807	2
30	Tie Rod Screw	87-23257-04	2
31	Tie Rod Set Screw	87-23164-14	2
32	Handheld remote	90-33450-01	1
33	Tension Plate	87-22381	1
34	M5 x 0.8 Hex Flanged Nut	87-23149-05	2
D	Battery Lead Wire Set	87-17358	1
D	Solenoid Box Wiring Assembly	87-17359	1
D	Owner's Manual	87-17375	1

NA Not Applicable
 AR As Required
 D Not Shown

GP2300 WINCH ASSEMBLY

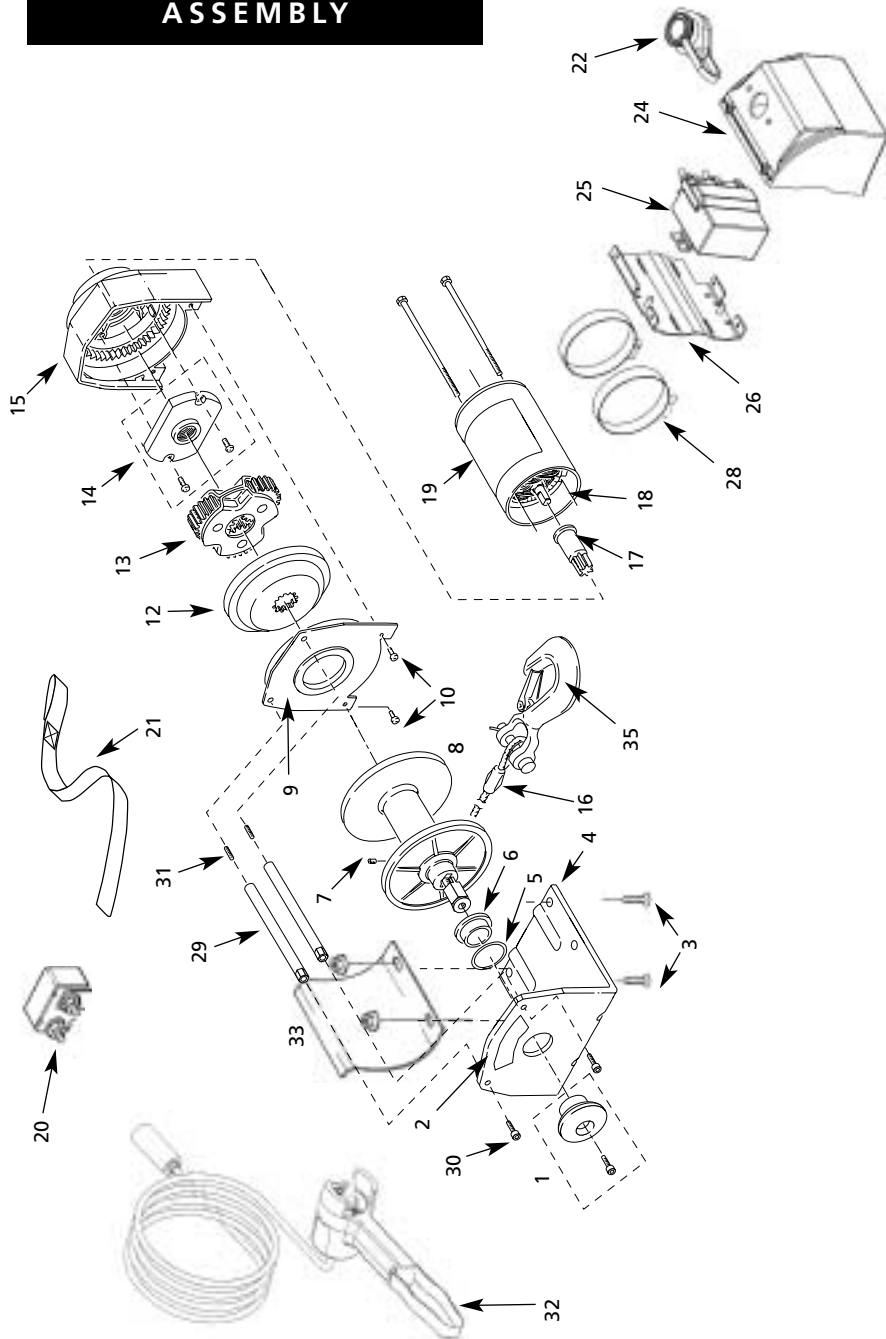


REPLACEMENT PARTS LIST

Reference Number	Description	Part Number	Qty
1	Freewheel Knob Assembly	87-10786	1
2	Label-Instruction-Freewheel	87-10903	1
3	Screw, FCHSS M6 x 1 x 16	87-22291-02	2
4	T-Series Baseplate Assembly	87-20426	1
5	.020 Thick Flat Washer	90-23193-03	AR
	.030 Thick Flat Washer	90-23120-05	AR
6	T-Series Bushing	87-10466	1
7	M5 x 0.8 x 6 Set Screw	87-23309-01	1
8	Drum Assembly	87-20371	1
9	Drum Support Plate	87-33329	1
10	Screw, STPH M4 x 0.7 x 10	87-23030-14	2
12	T-Series Rotator Gear	87-33289	1
13	T-Series Carrier Assembly	87-20308	1
14	Brake Assembly	87-22541-01	1
15	Stationary Gear Housing Assembly	87-20425	1
16	Wire Rope Assembly with hook	1535C	1
17	Motor Pinion Gear	87-22401	1
18	Motor (includes Through-Bolts) and label	87-17355	1
19	Product/Warning Label	87-22936	1
20	Circuit Breaker Assembly	87-10799	1
21	Handsaver, Nylon Cord	87-31120	1
22	Socket Assembly	90-25048-01	1
24	Solenoid box with label	87-17360	1
25	Solenoid, 12V	98-10880	1
26	Solenoid bracket	87-24414	1
28	Clamp	87-14460	2
29	Tie Rod	87-10807	2
30	Tie Rod Screw	87-23257-04	2
31	Tie Rod Set Screw	87-23164-14	2
32	Handheld remote	90-33450-01	1
33	Tension Plate	87-22381	1
34	M5 x 0.8 Hex Flanged Nut	87-23149-05	2
D	Battery Lead Wire Set	87-17358	1
D	Solenoid Box Wiring Assembly	87-17359	1
D	Owner's Manual	87-17375	1
D	Roller Fairlead	1560C	1

NA Not Applicable
 AR As Required
 D Not Shown

GP3000 WINCH ASSEMBLY



REPLACEMENT PARTS LIST

Reference Number	Description	Part Number	Qty
1	Freewheel Knob Assembly	87-10786	1
2	Label-Instruction-Freewheel	87-10903	1
3	Screw, FCHSS M6 x 1 x 16	87-22291-02	2
4	Baseplate Assembly	87-41354	1
5	.020 Thick Flat Washer	90-23193-03	AR
	.030 Thick Flat Washer	90-23120-05	AR
6	T-Series Bushing	87-10778	1
7	M5 x 0.8 x 6 Set Screw	87-23309-01	1
8	Drum Assembly	87-20371	1
9	Drum Support Plate	87-33329	1
10	Screw, STPH M4 x 0.7 x 10	87-23030-14	2
12	T-Series Rotator Gear	87-33309	1
13	T-Series Carrier Assembly	87-20308	1
14	Brake Assembly	87-22541-01	1
15	Stationary Gear Housing Assembly	87-20309-01	1
16	Wire Rope Assembly	1511F	1
	Wire Rope Assembly w/ hook (CE Version)	1511G	1
17	Motor Pinion Gear	87-22401	1
18	Motor (includes Through-Bolts) and label	87-17356	1
19	Product/Warning Label	87-22936	1
20	Circuit Breaker Assembly	87-22873-14	1
21	Handsaver, Nylon Cord	87-31120	1
22	Socket Assembly	90-25048-01	1
24	Solenoid box with label	87-17361	1
25	Solenoid, 12V	98-10880	1
26	Solenoid bracket	87-24414	1
28	Clamp	87-14459	2
29	Tie Rod	87-10807	2
30	Tie Rod Screw	87-23257-04	2
31	Tie Rod Set Screw	87-23164-14	2
32	Handheld remote	90-33450-01	1
33	Tension Plate	87-22381	1
34	M5 x 0.8 Hex Flanged Nut	87-23149-05	2
35	Clevis Hook	87-20312	1
	Not applicable for CE Version	-	-
D	Battery Lead Wire Set	87-17358	1
D	Solenoid Box Wiring Assembly	87-17359	1
D	Owner's Manual	87-17375	1
D	Roller Fairlead	1560C	1

NA Not Applicable
 AR As Required
 D Not Shown

TROUBLESHOOTING CHART

If a problem arises, contact your nearest Superwinch dealer or repair center.

Symptom	Possible Cause(s)	Corrective Action
Motor will not operate or runs in one direction only	<ol style="list-style-type: none"> 1. Switch inoperative 2. Broken wires or bad connection 3. Damaged motor 	<ol style="list-style-type: none"> 1. Replace switch 2. Check for poor connections 3. Replace or repair motor
Motor runs extremely hot	<ol style="list-style-type: none"> 1. Long period of operation 2. Damaged motor 	<ol style="list-style-type: none"> 1. Allow to cool 2. Replace or repair motor
Motor runs but with insufficient power or line speed	<ol style="list-style-type: none"> 1. Weak battery 2. Battery to winch wire too long 3. Poor battery connection 4. Poor ground 5. Damaged motor 	<ol style="list-style-type: none"> 1. Recharge or replace battery. Check charging system 2. Keep winch within distance allowed by lead wires 3. Check battery terminals for corrosion. Clean as required 4. Check and clean connections 5. Repair or replace motor
Motor runs but drum doesn't turn	<ol style="list-style-type: none"> 1. Clutch not engaged 	<ol style="list-style-type: none"> 1. Engage clutch
Winch runs backwards	<ol style="list-style-type: none"> 1. Motor wires reversed 2. Switch wires reversed 3. Switch installed incorrectly 	<ol style="list-style-type: none"> 1. Recheck wiring 2. Recheck wiring 3. Check switch installation
Winch coasts	<ol style="list-style-type: none"> 1. Excessive load 	<ol style="list-style-type: none"> 1. Reduce load or double line

SUPERWINCH®

WARRANTY REPAIR CENTERS

USA

Superwinch Inc.
Winch Drive
Putnam, CT 06260
phone: 860-928-7787
repair@superwinch.com
Electric Motor Repair
2010 North 4th Street
Minneapolis, MN 55411
phone: 612-588-4693

Berens & Associates
124 Hegenberger Loop
Oakland, CA 94621
phone: 800-540-2858
berens94621@yahoo.com

Zorko's Alternator Service
241 Wells Road
Home, PA 15747
phone: 800-468-5055
zasapw@microserve.net

Electric Motors of Iowa City
50 Commercial Court
Iowa City, IA 52246
phone: 319-354-4040
emic4040@aol.com

CANADA

Demand Electric
228-39th St. N.E.
Calgary, AB T2E 2M5
403-230-2709

Harold Supply
3 Southerland Ave.
Sudbury, Ont. P3C 3A7
705-761-4455

Explora Industries Ltd.
9605-5th Ave.
Edmonton, AB T6E 0B2
780-430-8591

Dayworth Sales
1 Saunders Rd. Unit 2
Barrie, Ont. 9A7 9A7
705-726-7778

Les Equipment Twin
10401 Parkway Blvd.
Ville D'Anjou, PQ H1J 1R4
514-353-1190

Buffalo Industries
251-253 Princess Street
Winnipeg, Manitoba R2C 1M1
204-942-1951

Power Plus Tool Repair
57 Millenium Ave.
Moncton, NB E1E 2G2
560-855-8665

Muskoka Auto Parts
11 King William St.
Huntsville, Ont. P1H 2K8
705-789-2321

Lou Dennis Auto
Hiway 11 South
Sundridge, Ont. P0A 1Z0
705-384-5345

Outdoors Plus
128 Regional St.
P.O. Box 1349
Port Aux Basques, NF A0M 1C0
709-695-7533

Bobcaygeon Auto and Marine
91 Main St.
Bobcaygeon, Ont. K0M 1A0
705-738-2317

MAP Bracebridge
19 Taylor Rd.
Bracebridge, Ont. P1L 1W3
705-645-8785

MAP Fenelon Falls
165 Lindsay St.
Fenelon Falls, Ont. K0M 1N0
705-887-6232

Central Electric Motor Rewind
#1-1960 Windsor Rd.
Kelowna, BC V1Y 2Y3
250-860-4415
jnelsoncentral@netscape.net

Delta Tool Repair Limited
114-7533, 135th St.
Surrey, BC V3W 0N6
604-591-3230

Ted's Power Tool Repair
426-44th St. East
Saskatoon, SK S7K 0W1
306-934-6155

Bob's Electric Truck Service
845-B Macdonald Ave.
Regina, SK S4N 2X5
306-721-4148

Off Road Canada
251-12th St. "B" North
Lethbridge, AB T1H 2K8
403-327-7722

Gary's Starter & Alternator
P.O.Box 7 Site 4
RR 1 Mount Uniacke B0N 1Z0
Contact: Gary Thorne
902-757-2388

Power Blitz Mftg. & Maintenance
577 Edgeley Blvd. Unit 6
Concord, Ont. L4K 4B2
905-669-8209
ali@powerblitz.com

Bruce's Recreation
92 Balbo Dr.
Shoal Harbour Nfld A5A 4A8
709-466-3355

Atlantic Recreation & Marine
5 School St.
Sydney, Nova Scotia
B1S 3G1
902-567-1697
sbidart@thearm.ca

UNITED KINGDOM

Superwinch, LTD
Abbey Rise, Whitchurch road
Tavistock, Devon PL19 9DR
+44 (0) 1822 614101

WORLDWIDE Contact your Local Superwinch Distributor or call Superwinch.